



# House Call

*Care our community can trust. Since 1956.*

## Providing Trusted, Comprehensive Healthcare in the Place You Call Home

From annual wellness exams to surgical services to rehabilitation and long-term care, Mille Lacs Health System provides the people of the Mille Lacs region with comprehensive, high-quality healthcare.

**Scheduling an appointment is simple.  
Just call 320-532-3154.**

### Our Services

- › Virtual Visits with TeleHealth
- › Hospital
- › Primary Care (Clinics)
- › Emergency/Urgent Care
- › Ambulance Services (Onamia and Isle)
- › Visiting Specialists
- › Respiratory Therapy
- › Geriatric Psychiatry Unit

- › Sleep Medicine
- › Infusion Services
- › Swing Bed (Transitional) Care Program
- › Laboratory
- › Rehabilitation
- › Surgical Services
- › Radiology and Diagnostic Imaging
- › Eye Care
- › Chiropractic and Physical Therapy
- › Behavioral Health
- › Diabetes Education
- › Hospice/Home Care
- › Long-Term Care Facility
- › Nephrology
- › Pain Management
- › Memory Care Unit



**Our communities deserve the highest level of care at the most convenient location.**

MILLE LACS HEALTH SYSTEM | 320-532-3154 | MLHEALTH.ORG | 200 ELM ST. NORTH, ONAMIA, MN 56359



# You can spread COVID-19 and not know it. Meet Parker.



## DAY 0

Parker spends time near someone with COVID-19.



## DAY 3

Parker gets tested for COVID-19.  
The test result is negative.



## DAY 5

Parker goes to school and a family gathering.  
He does not know that he is spreading COVID-19 to other people.

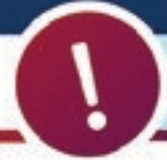


## DAY 6

Parker starts to feel sick and gets tested again. This test is positive.



Parker is now staying away from others, but he may have already spread COVID-19 to other people.



## STAY HOME

if you've had close contact with someone who has COVID-19.

It can take **up to 14 days** for someone with COVID-19 to start feeling sick.



**STAY SAFE MN**

# When It Comes to Your Health, Don't Wait

MLHS wants to remind you that we're still here for you! Our top priority remains keeping our patients, visitors and staff safe.

While we encourage you to take all restrictions related to the pandemic seriously, please know that safe, quality healthcare is available to you and your loved ones. We have protocols in place that help us deliver our services to the community while optimizing safety for our patients and staff.

**Emergency Room open 24/7 | Urgent Care open daily, 8 a.m. – 8 p.m.**

200 Elm St. North, Onamia, MN 56359



## TeleHealth Virtual Visits

For added patient convenience and comfort, we're offering a TeleHealth option for clinic appointments. If you'd like to have your appointment on your house phone, cellphone or computer, just ask for the TeleHealth option when you make your appointment.

To schedule, call: 320-532-3154.

### COVID-19 Nurse Hotline:

320-532-2989

If you are experiencing symptoms of COVID-19, please call before coming in.

**We are currently testing symptomatic patients only.**

## Find a Provider You Trust – Close to Home

### Onamia Family Clinic

22 Elm St. North  
Onamia, MN 56359

### Isle Family Clinic

375 West Isle St.  
Isle, MN 56342

### Garrison Family Clinic

27378 State Hwy. 18  
Garrison, MN 56450

### Hillman Family Clinic

26362 370th Ave. (County Rd. 8)  
Hillman, MN 56338



# Some of our newest Family Practice providers...

**Establish a relationship with a provider today. Here to see you, now.**



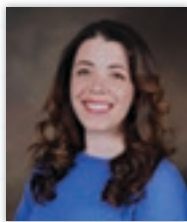
**Josh Kruize, PA-C, MPAS**

“My goal is to provide excellent, comprehensive care and really listen to my patients.”



**Kelsey Merck, PA-C, MSPAS**

“At the end of the day, I want each patient to feel confident and well-educated with their medical decisions.”



**Bess Kuzma, PA-C, MPAS**

“I want to do my best to inspire healthy lifestyles and promote a peaceful, inclusive and welcoming clinic environment.”



**Travis Green, PA-C, MPAS**

“I believe in shared decision-making with patients.”

## COVID-19 Vaccine Update

The COVID-19 vaccine is an important topic for us. Vital logistics, like timing and patient distribution, are dependent on so many factors. At the time this newsletter is being developed, no specifics are certain. Please check our social media channels often, as well as local news, to stay current on the most up-to-date information.



Facebook.com/millelacshealthsystem



@millelacshealth



millelacshealthsystem